



Use the icons at the bottom of the screen to move through the app.



Search author or title or keyword in Wisconsin's Digital Library



Open the last library collection you browsed or double-tap to browse all collections



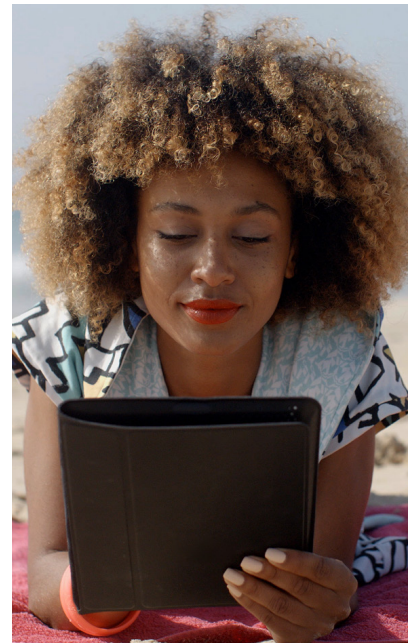
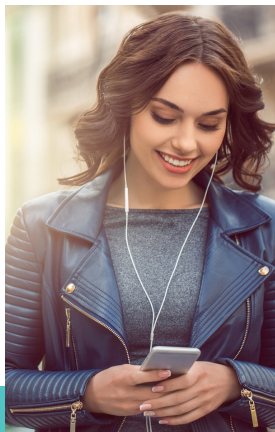
Menu for Help and more options



Shelf with your current borrowed items and holds



See your checkout activity by month



For questions with Libby, call your nearest local library at madpl.org/locations or email reference@madisonpubliclibrary.org

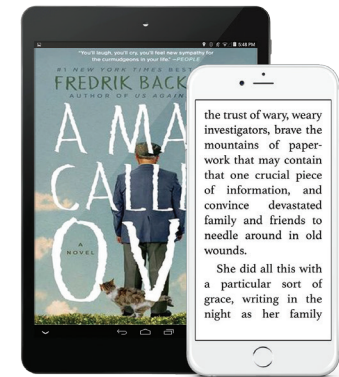
For all up to date information about Libby, visit madpl.org/libby



MADISON
PUBLIC
LIBRARY



Getting Started with Libby



Download and read thousands of magazines, eBooks and Audiobooks using the Libby App on your phone, tablet or computer. We'll show you how to download the app, borrow items, place holds and more.

All materials are free to borrow and access from home with your Madison Public Library card.



MADISON
PUBLIC
LIBRARY

Setting Up the App



1. Install the Libby app from the app store on your Android or iOS device. Or, visit **libbyapp.com** in your browser.
2. Libby will ask if you have a library card. Choose **Yes**.
3. Select a location. It may find your library location automatically. Any Madison area public library is okay to choose, even if it isn't the location you use.
 - If it doesn't find your library automatically, choose **I'll Search for a Library** and type in your zip code.
 - Madison Public Library cardholders should then select: **Wisconsin Public Library Consortium, South Central Library System - [Any Library]**.
4. Add a library card. It will ask "Where do you use your library card?"
 - Tap **Choose a Location** and select **South Central -- LINKcat libraries**.
 - Enter your whole library card number, without spaces.

What should I do if my library card number doesn't work?

Double check that you entered all the numbers correctly. If it still doesn't work, your library card may be expired. (Cards expire every four years.) Come to the library with a photo ID and we can update it.

Your Libby setup is now complete!

Borrowing Books

Browse the collections, or search for a title or author by tapping the magnifying glass at the bottom to get to the search screen. Enter the author name or title.

When you find an available book, tap **Borrow** and then select a time length.

- You can borrow most eBooks and audiobooks for up to 21 days by clicking the currently defaulted loan period and changing it **BEFORE** you click 'Borrow'.
- You can have 10 total items from Libby out on your card at one time.
- Borrowed titles will download to the app when you're connected to Wi-Fi, so you can read or listen to them when you're offline.

Place a Hold

If a book has a wait list, tap **Place A Hold** to add it to your Holds list.

- You will be asked for your email so you can be notified when your hold becomes available.
- You can have up to 10 holds.

View Only What's Currently Available

To filter search results to books with no waitlist:

- Tap **Refine** on the right side of a collection or search results, at the top of the list. Tap **Availability** (you may need to scroll to get to that choice).
- Then tap **Available Now**.

